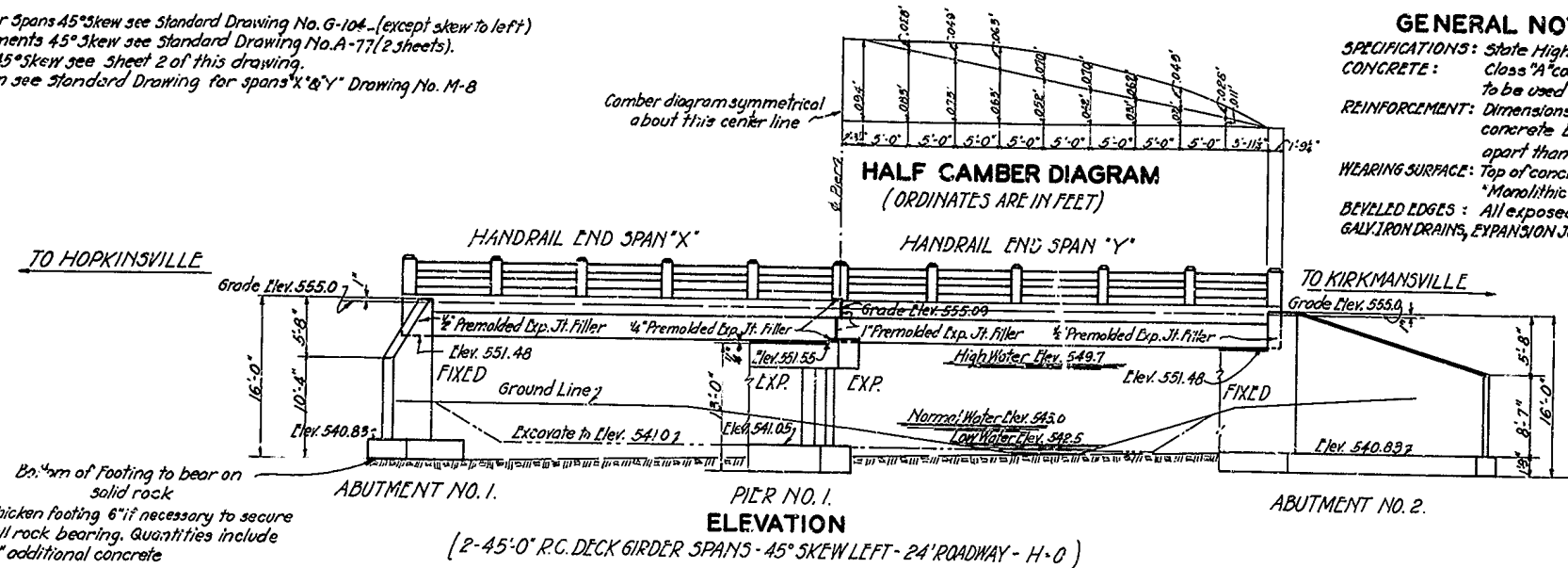


REFERENCE.

For details of 2-45'-0" R.C. Deck Girder Spans 45° Skew see Standard Drawing No. G-104... (except skew to left)
 For details of 2-16'-0" Wing Wall Abutments 45° Skew see Standard Drawing No. A-77 (2 sheets).
 For details of 13'-0" Web Wall Pier 45° Skew see Sheet 2 of this drawing.
 For details of Handrail for 45° span see Standard Drawing for spans "X" & "Y" Drawing No. M-8

GENERAL NOTE.

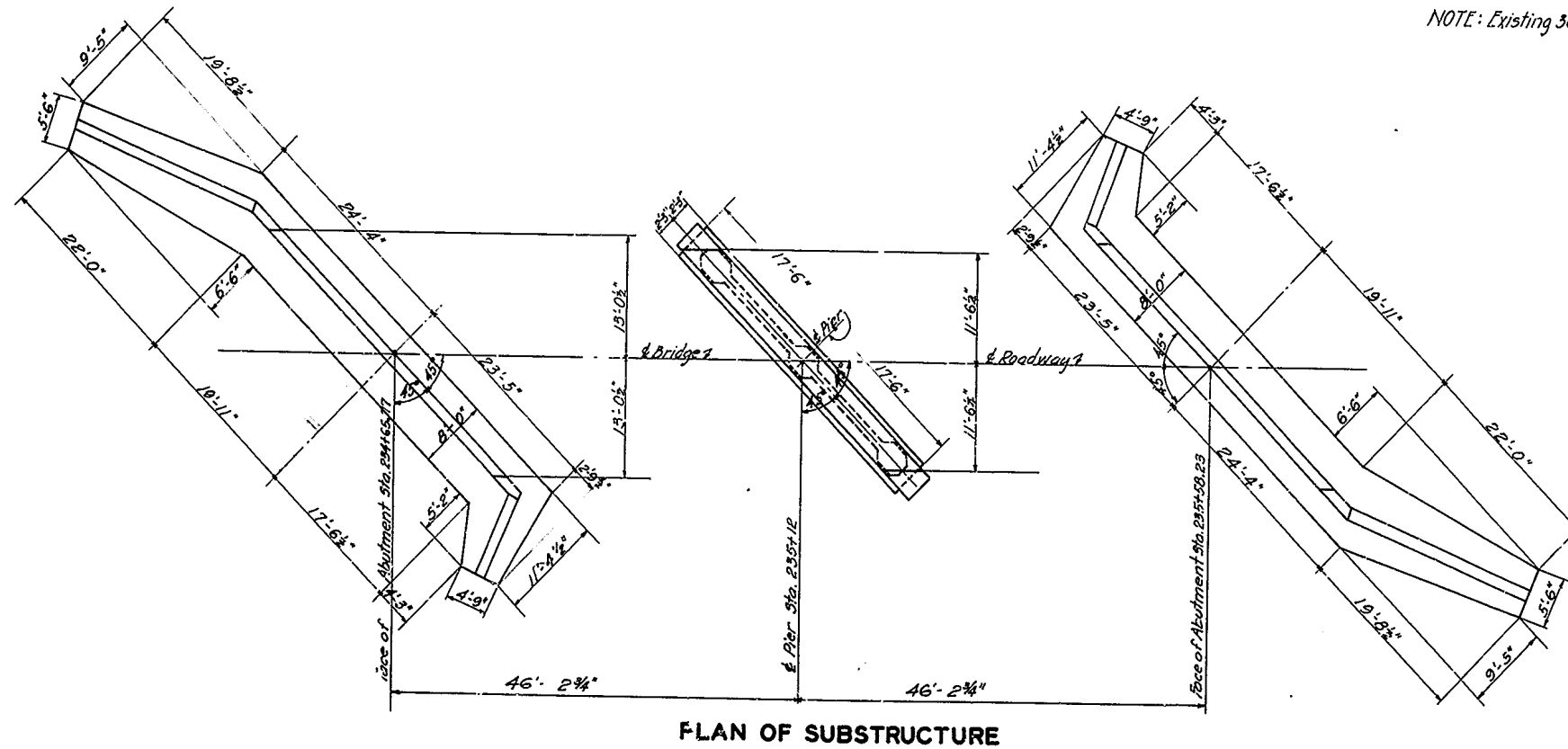
SPECIFICATIONS: State Highway Department, Kentucky 1932
CONCRETE: Class "A" concrete to be used thruout except in Handrail & Posts. Class "D" concrete to be used in Handrail and Posts.
REINFORCEMENT: Dimensions from face of concrete to steel are clear distances. Precast mortar or concrete blocks supporting reinforcement shall be spaced not farther apart than 50 diameters of the supported bar.
WEARING SURFACE: Top of concrete slab shall be finished in accordance with specifications for "Monolithic Wearing Surface".
BEVELED EDGES: All exposed corners shall be beveled $\frac{1}{8}$ " unless otherwise shown on plans.
GALV. IRON DRAINS, EXPANSION JOINT FILLER, & STEEL BOLTS FOR BRONZE PLATES: These items shall be included in the price bid per cu. yd. of class "A" concrete.
STANDARD PLANS: Notes or requirements shown on standard plans in conflict with requirements shown hereon or with 1932 edition of specifications shall be disregarded, and 1932 specifications and notes shown hereon shall govern.



Bottom of footing to bear on solid rock
 NOTE: Thicken footing 6" if necessary to secure full rock bearing. Quantities include 6" additional concrete

(2-45'-0" R.C. DECK GIRDER SPANS - 45° SKEW LEFT - 24' ROADWAY - H-O)

NOTE: Existing 30 ft. steel span 200 ft. upstream.



ESTIMATE OF QUANTITIES

CONCRETE, CLASS "A"	376.9 CU. YDS.
CONCRETE, CLASS "D"	5.6 CU. YDS.
REINFORCEMENT	64940 LBS.
POLE EXPANSION PLATES (CLASS "B" BRONZE)	1080 LBS.
EXCAVATION, STRUCTURE (UNCLASSIFIED)	500 CU. YDS.
CHANNEL CHANGE (SEE ROAD PLANS)	

G-104
 A-77 (Two Sheets)
 M-8

NOTE: This drawing supercedes drawing No. 5199 for bridge at this location. Change in size approved by Commission March 28, 1933.

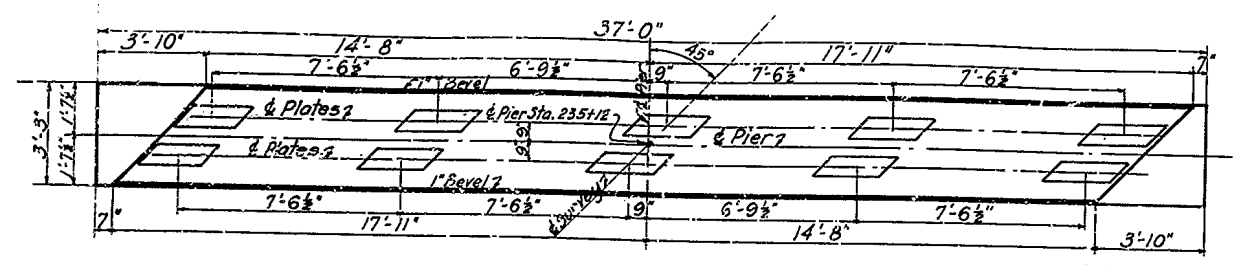
BRIDGE OVER FORK OF LITTLE RIVER

BRIDGE OVER FORK OF LITTLE RIVER (SHEET 1 OF 2)

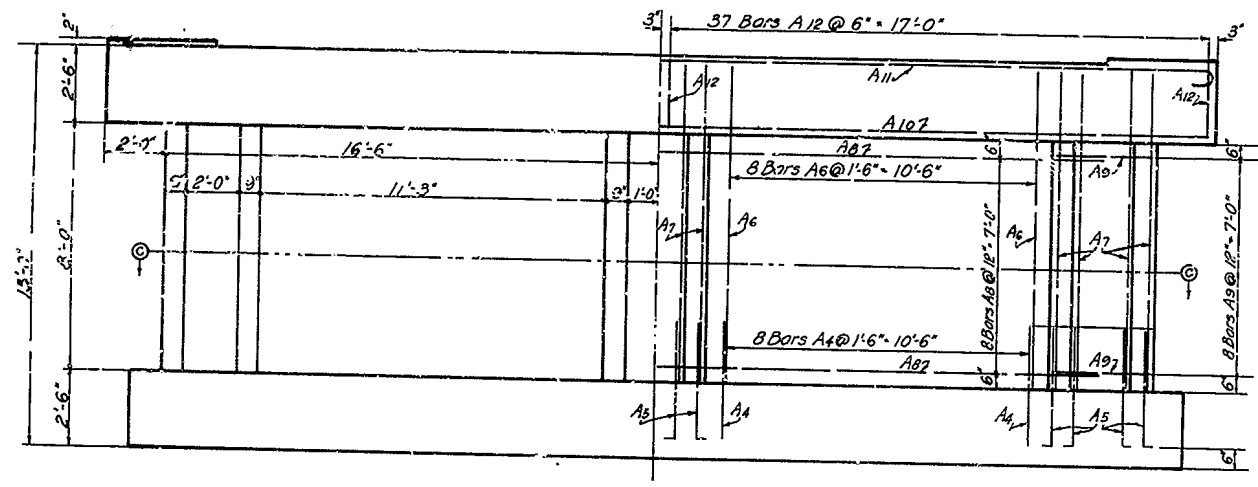
COMMONWEALTH OF KENTUCKY
 STATE HIGHWAY DEPARTMENT
 FRANKFORT
 COUNTY OF
CHRISTIAN
 HOPKINSVILLE - KIRKMANVILLE
 ROAD PROJECT NO.
 STATION 295+12

CHECKED BY: [Signature]
 DRAWN BY: [Signature]
 DESIGNED BY: L. C. [Signature]
 DATE: [Date]

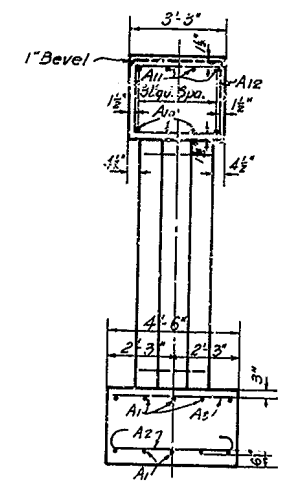
PER. ROAD DIST.	STATE	PER. NO.	FORMA. YEAR	SHEET NO.	TOTAL SHEETS
7	KY.				



PLAN OF CAP



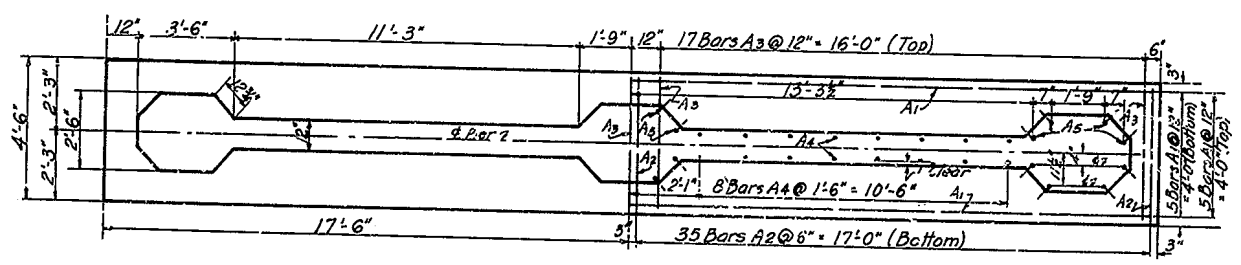
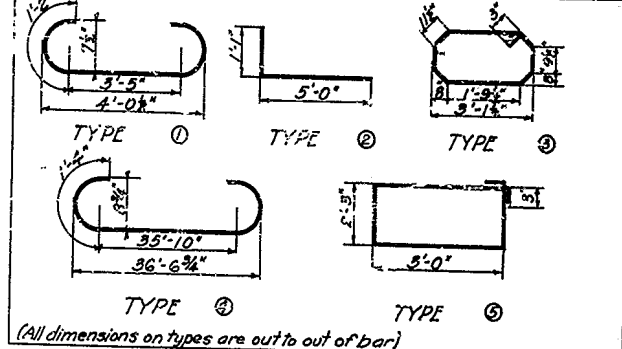
SIDE ELEVATION



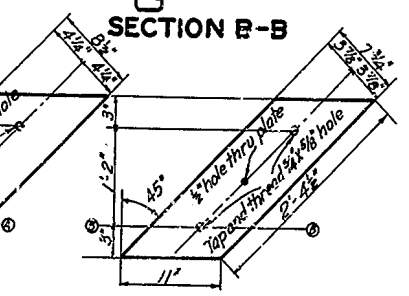
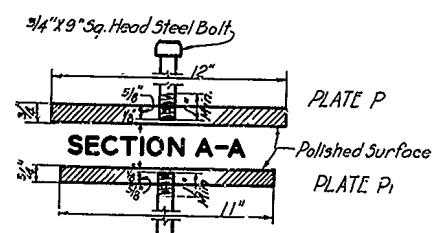
END ELEVATION

BILL AND TYPES OF REINFORCEMENT

MARK	TYPE	NO.	SIZE	LENGTH	LOCATION
				FT. IN.	
A1	Str.	10		34 0	Top & Bottom of Footing
A2	Str.	74		5 9	Bottom of Footing
A3	Str.	32		4 0	Top of Footing
A4	Str.	24	1/2" φ	4 0	Footings into Web Wall
A5	Str.	24	1/2" φ	6 0	" " " "
A6	Str.	32	1/2" φ	10 4	Columns
A7	Str.	24	1/2" φ	10 4	Web Wall
A8	Str.	16	1/2" φ	10 4	Columns
A9	Str.	24	3/8" φ	24 6	Web Wall
A10	Str.	4	7/8" φ	5 6	Columns
A11	Str.	4	"	3 0	Cap
A12	Str.	74	1/2" φ	3 0	"

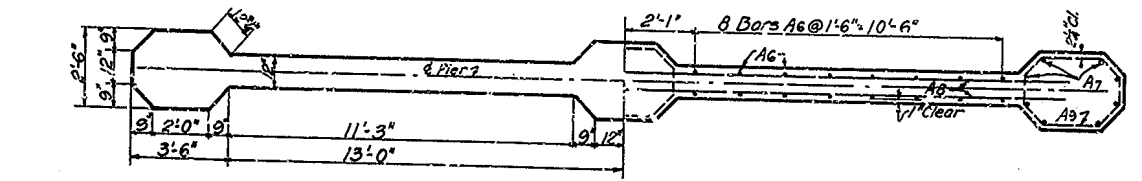


PLAN OF FOOTING



DETAIL OF EXPANSION PLATES

NOTE: These plates replace plates shown on Standard Dwg. No. G-104. 10 plates P & 10 plates P1 required for Bridge. All plates to be class "B" bronzes.



SECTION C-C

ESTIMATE OF QUANTITIES
 CONCRETE, CLASS "A" 59.2 CU.YD'S.
 REINFORCEMENT 3660 LBS.

DESIGNED BY: D.T.O. DATE: 11-23-28
 CHECKED BY: L. GERRARD DATE: 11-23-28
 DRAWN BY: D.T.O. DATE: 11-23-28
 REVISIONS: NONE

BRIDGE OVER LITTLE RIVER SHEET 2 OF 2

COMMONWEALTH OF KENTUCKY
 STATE HIGHWAY DEPARTMENT
 FRANKFORT
 COUNTY OF

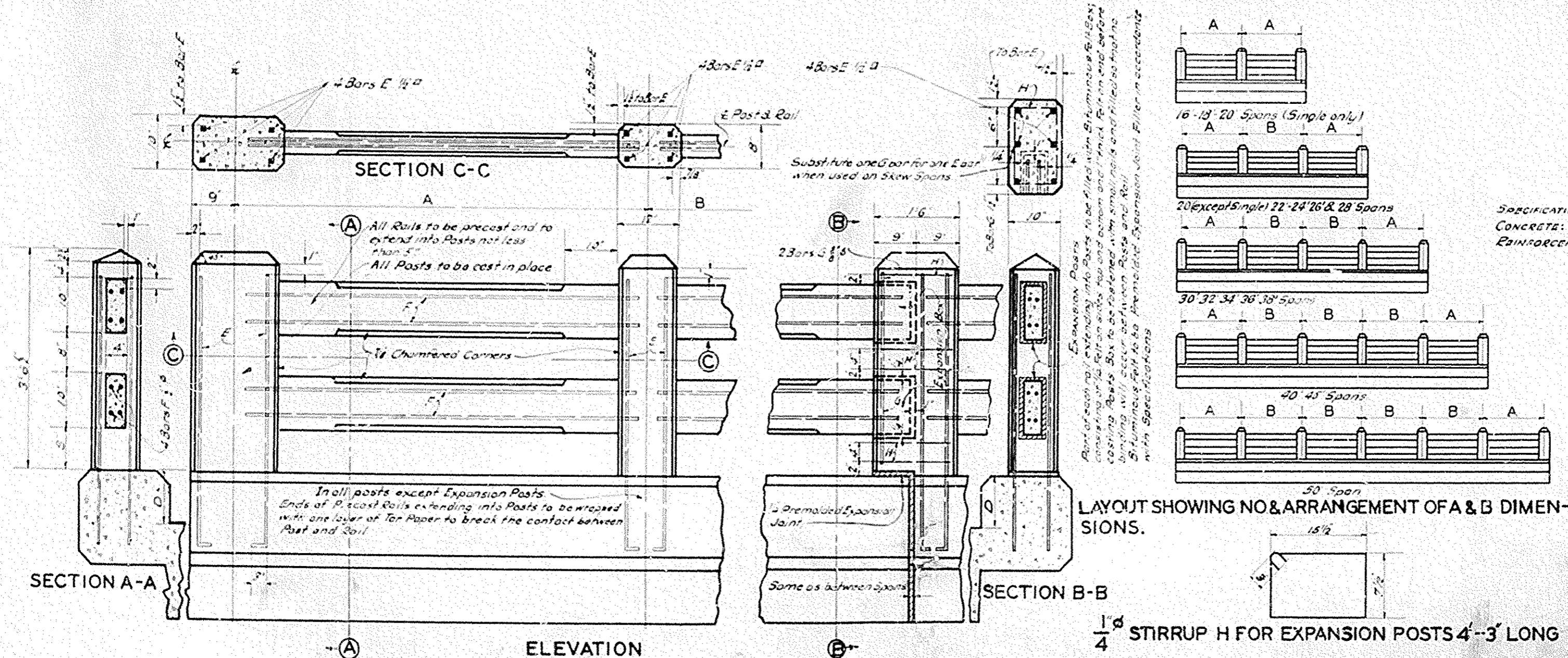
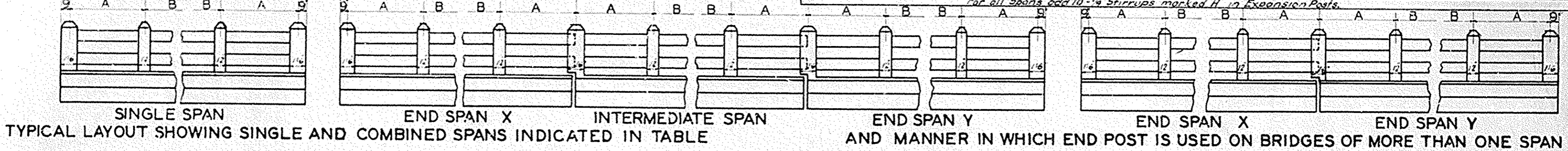
CHRISTIAN

HOPKINSVILLE - KIRKMANVILLE
 ROAD PROJECT NO.
 STATION 235+12

11-23-28 5588

QUANTITIES IN THIS TABLE ARE FOR RAILING ON BOTH SIDES OF SPAN

SINGLE SPAN										END SPAN X										END SPAN Y										INTERMEDIATE SPAN																															
Dimension		Bors E 1/2" D=10'		Bors E 1/2" D=16'		Bors F 3/8" D=10'		Steel D=10'		Steel D=16'		Concrete		Dimension		Bors E 1/2" D=10'		Bors E 1/2" D=16'		Bors F 3/8" D=10'		Steel D=10'		Steel D=16'		Concrete		Dimension		Bors E 1/2" D=10'		Bors E 1/2" D=16'		Bors F 3/8" D=10'		Steel D=10'		Steel D=16'		Concrete																					
A	B	NO	Length	NO	Length	NO	Length	NO	Length	NO	Length	NO	Length	A	B	NO	Length	NO	Length	NO	Length	NO	Length	NO	Length	NO	Length	A	B	NO	Length	NO	Length	NO	Length	NO	Length	NO	Length	NO	Length																				
FT.	IN.		FT.	IN.		FT.	IN.		FT.	IN.		FT.	IN.	FT.	IN.		FT.	IN.		FT.	IN.		FT.	IN.		FT.	IN.	FT.	IN.		FT.	IN.		FT.	IN.		FT.	IN.		FT.	IN.																				
16	8	3	24	7	24	5	3	32	8	5	274	287	1.39	16	9	1/2	24	7	16	5	3	32	8	9	4	1	254	263	1.26	16	9	1/2	24	7	24	5	3	32	8	9	238	295	1.26	16	9	6	16	4	7	16	5	3	32	9	2	4	3	1	270	272	1.13



GENERAL NOTE

Specifications: State Highway Department, Kentucky, 1930

CONCRETE: Class D concrete to be used thruout

REINFORCEMENT Dimension from face of concrete to steel is the clear distance

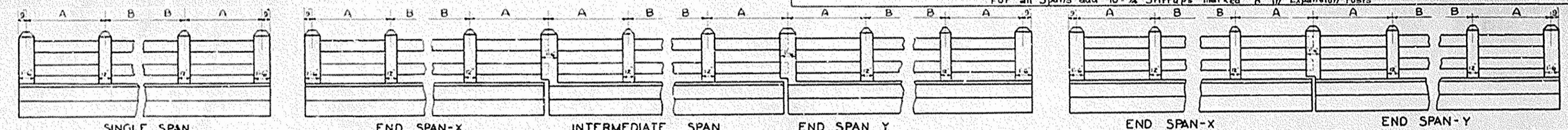
Precast mortar or concrete blocks supporting reinforcement shall be spaced not farther apart than 50 diameter of the supported bar.

COMMONWEALTH OF KENTUCKY
STATE HIGHWAY DEPARTMENT
STANDARD HANDRAIL
TYPE A
FOR CONCRETE BRIDGES

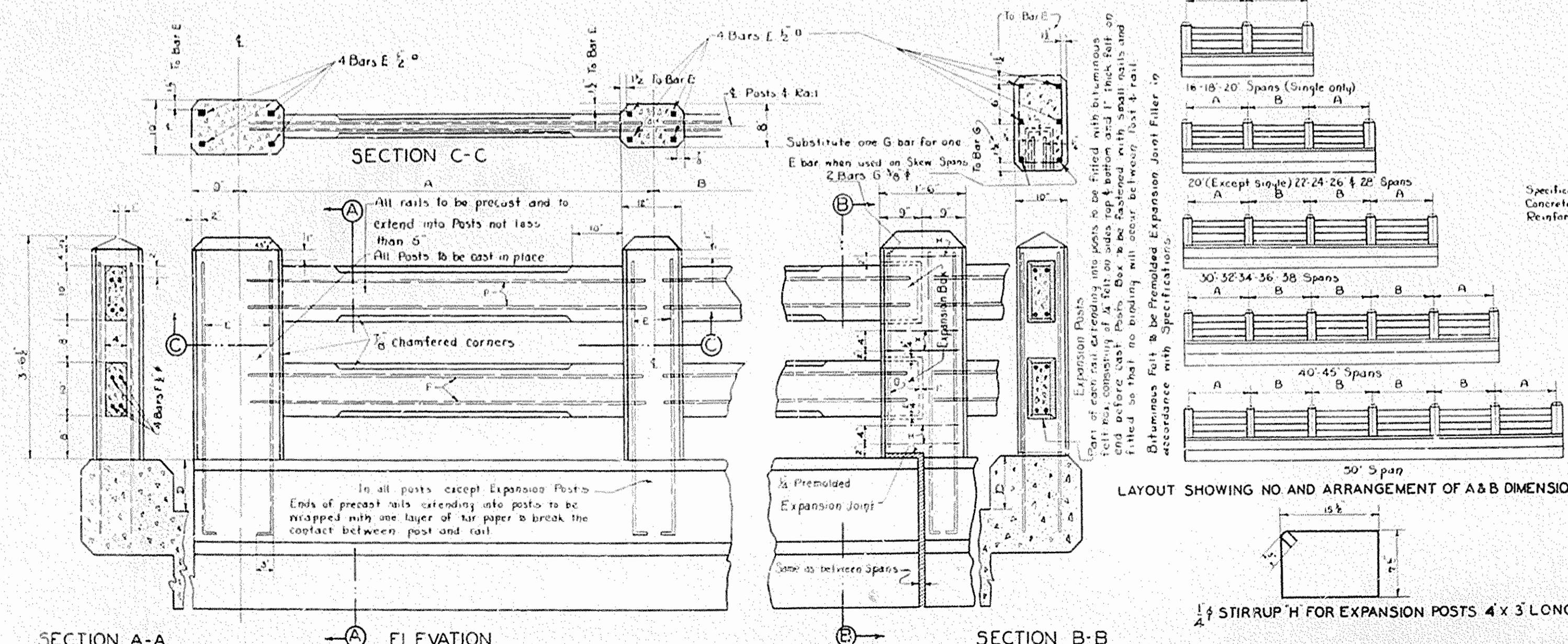
1/4" STIRRUP H FOR EXPANSION POSTS 4'-3" LONG

QUANTITIES IN THIS TABLE ARE FOR RAILING ON BOTH SIDES OF SPAN

Span Length Feet	SINGLE SPAN										END SPAN - X										END SPAN - Y										INTERMEDIATE SPAN															
	Dimension		Bars E-1/2"		Bars E-1/2"		Bars F-3/4"		Steel		Steel		Concrete		Dimension		Bars E-1/2"		Bars E-1/2"		Bars F-3/4"		Bars G-3/8"		Steel		Steel		Concrete		Dimension		Bars E-1/2"		Bars E-1/2"		Bars F-3/4"		Bars G-3/8"		Steel		Steel		Concrete	
	A	B	D=10'	Length	D=10'	Length	No	Length	Lbs	Lbs	Cu yds	A	B	D=10'	Length	D=10'	Length	No	Length	Lbs	Lbs	Cu yds	A	B	D=10'	Length	D=10'	Length	No	Length	Lbs	Lbs	Cu yds	A	B	D=10'	Length	D=10'	Length	No	Length	Lbs	Lbs	Cu yds		
16	8	3	24	4	7	5	5	52	8	5	274	287	1.39	16	9	1/2	16	4	7	16	5	5	32	8	9	4	3	1	254	265	1.26	16	9	1/2	16	4	7	24	5	5	32	8	9	288	295	1.26



TYPICAL LAYOUTS SHOWING SINGLE AND COMBINED SPANS INDICATED IN TABLE AND MANNER IN WHICH END POST IS USED ON BRIDGES OF MORE THAN ONE SPAN



GENERAL NOTE
 Specifications: State Highway Department, Kentucky.
 Concrete: Class D concrete to be used throughout.
 Reinforcement: Dimensions from face of concrete to steel, is clear distance. Precast mortar or concrete blocks supporting reinforcement shall be spaced not farther apart than 50 diameters of the supported bar.

COMMONWEALTH OF KENTUCKY
 DEPARTMENT OF HIGHWAYS
**STANDARD HANDRAIL
 TYPE - A
 FOR CONCRETE BRIDGES**

Designed by E. B. C. Date 11/25/34
 Checked by E. B. C. Date 11/25/34
 Drawn by M. B. Date 11/25/34
 Checked by M. B. Date 11/25/34